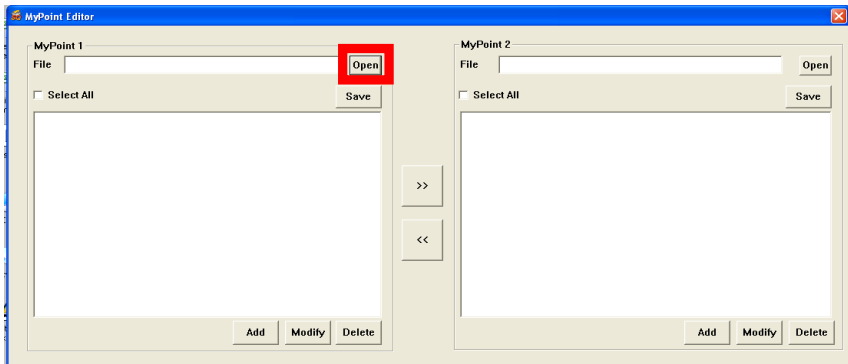


Transfer Procedure for saved user data **From Version 2.5.0.28 to Version 3.1.0.19**

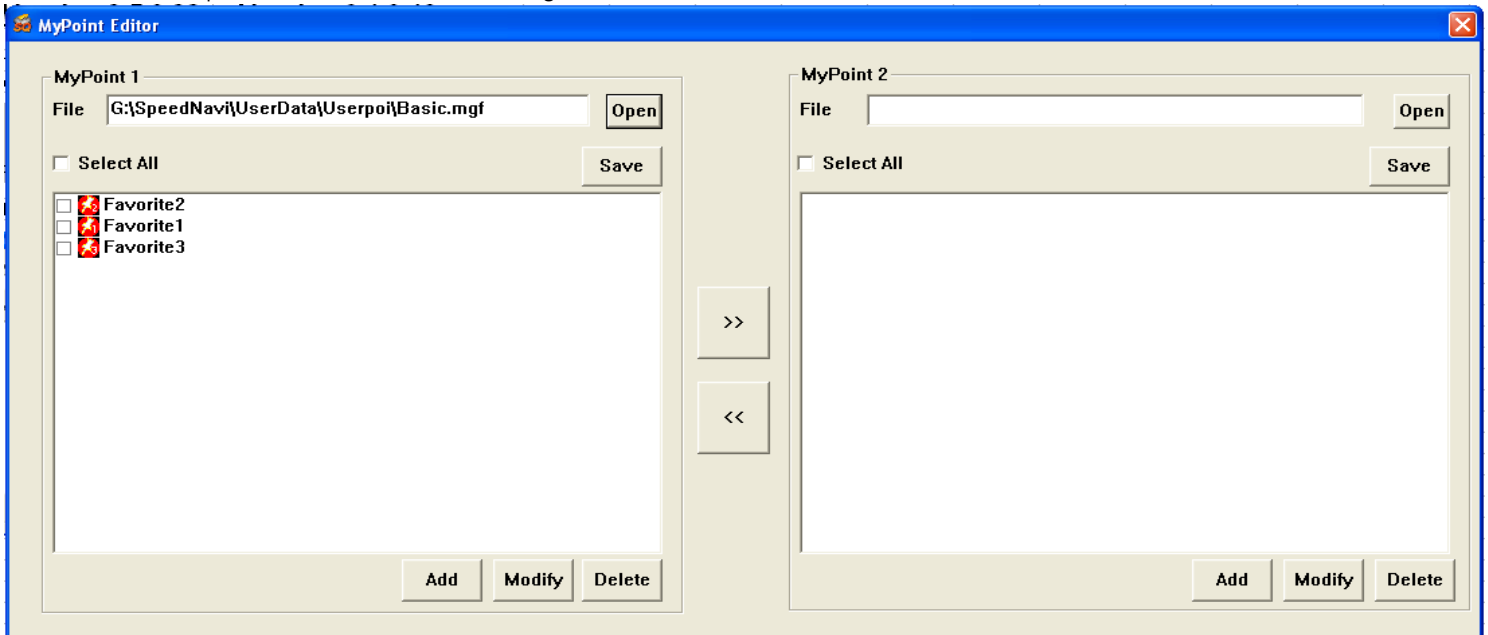
1. Insert the old version SD card into a PC.
2. Start the POI editor .EXE



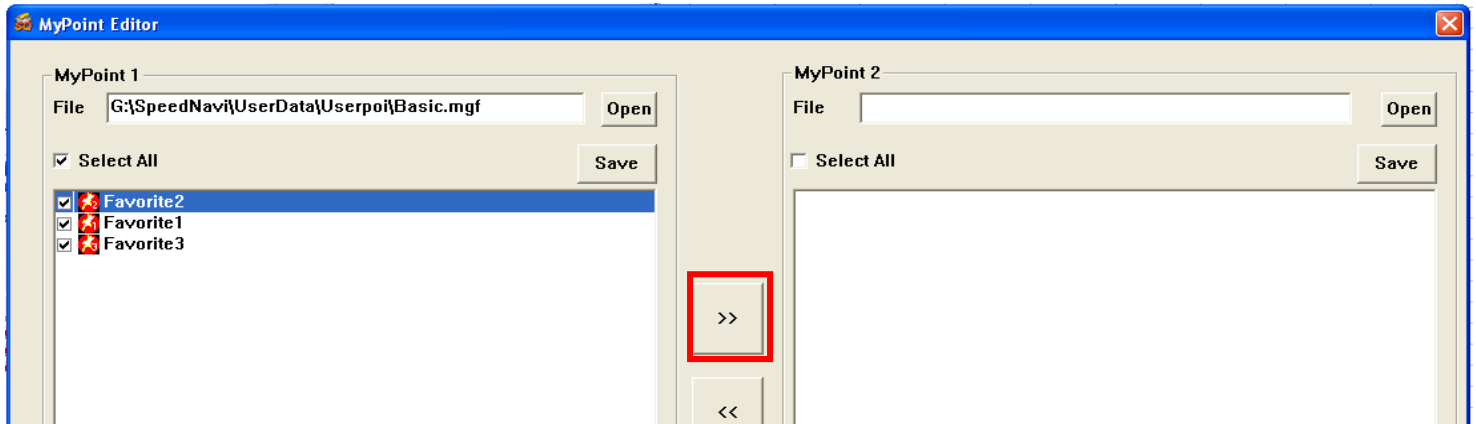
3. Click OPEN as below.

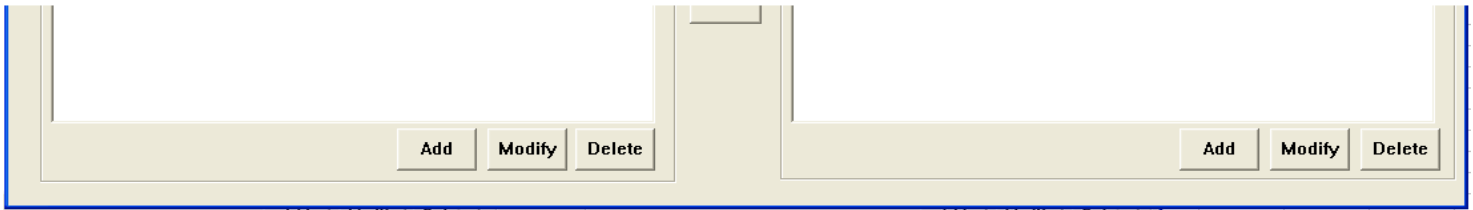


4. Browse to SD card/Speednavi/Userdata/UserPOI/Basic.mgf

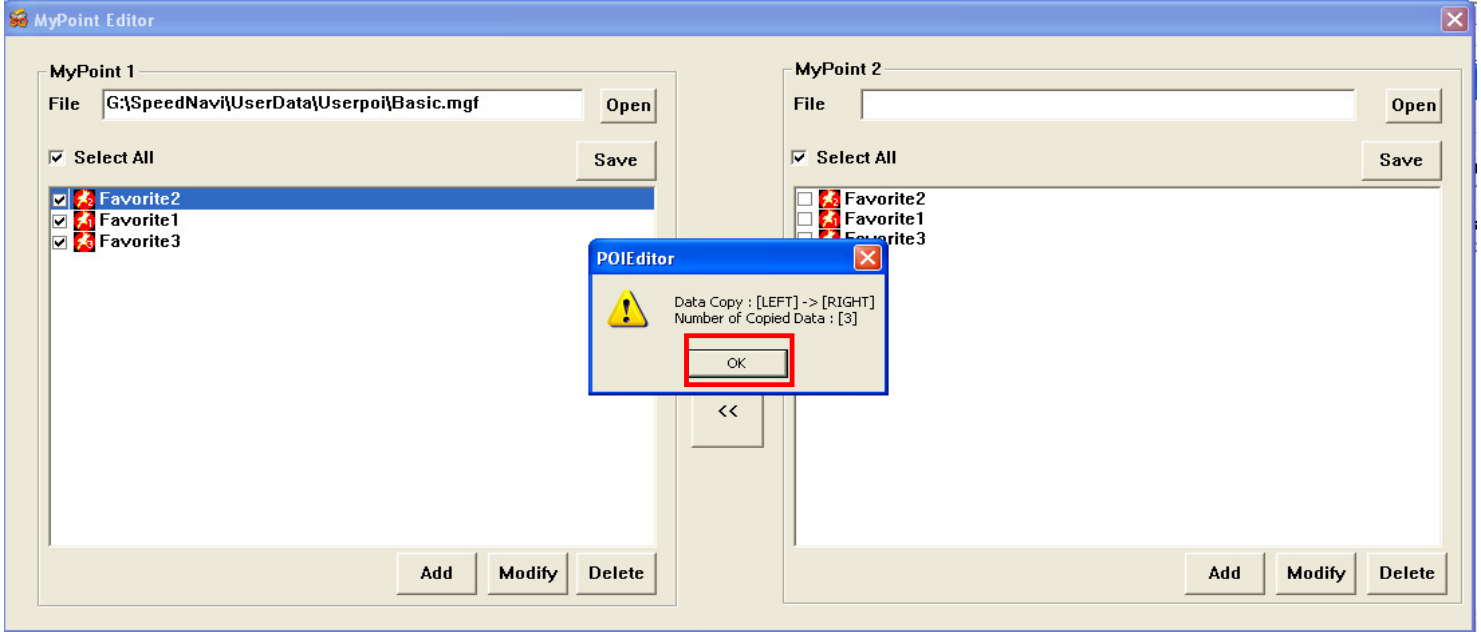


5. Click Select ALL. Then click >>

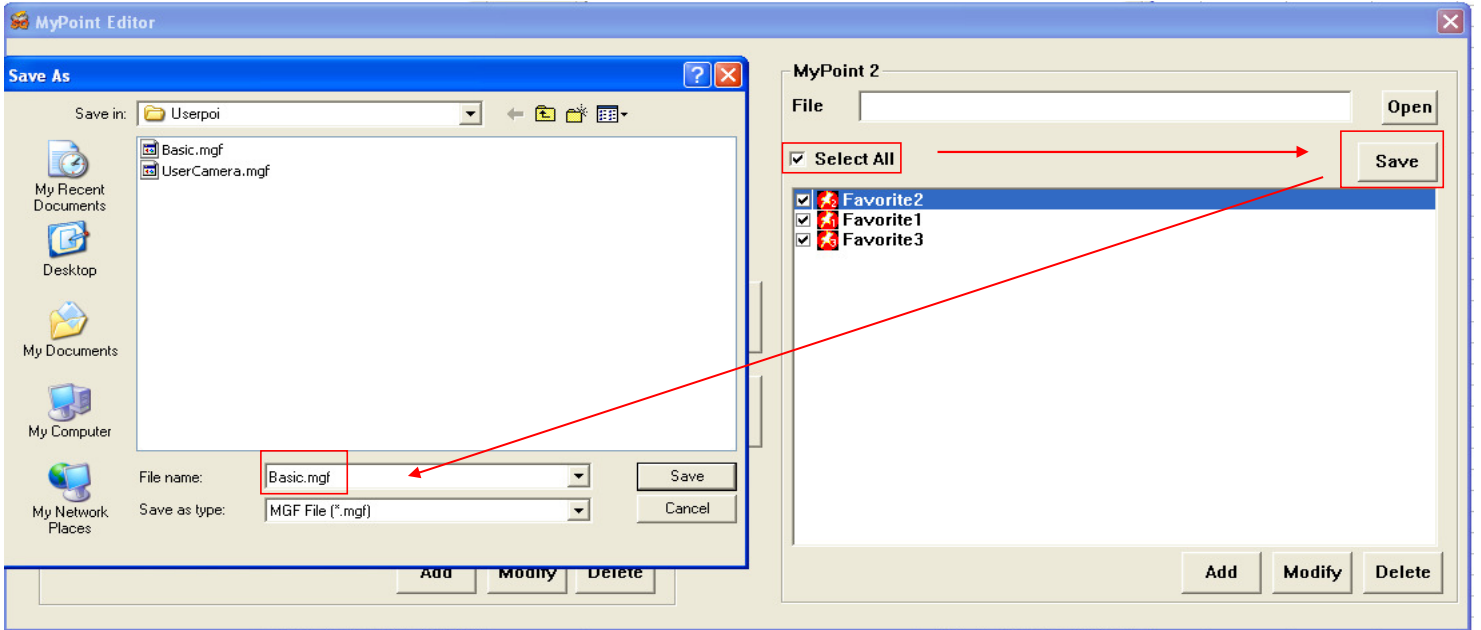




6. Confirmation screen will appear. Click OK



7. Click select ALL. Then click SAVE. Name the file basic.mgf



10. Save the new Basic.Mgf file on the PC.
11. Delete the OLD SPEEDNAVI(2.5.0.28) folder. Then copy the new Speednavi (3.1.0.19) folder into the SD card.
12. **COMPLETE THE LICENSE REGISTRATION PAGE (FOR NEW SPEEDNAVI UPDATE) BEFORE INSERTING THE OLD BASIC.MGF FILE**
13. After registration, re-insert the SD card into a computer and delete the existing BASIC.MGF file in the new SPEEDNAVI folder SD card (SD card/Speednavi/Userdata/UserPOI/Basic.mgf)
14. Copy the converted Basic.mgf file (from desktop) into the same location (SD card/Speednavi/Userdata/UserPOI/Basic.mgf)
15. Re-insert the SD card into the system and enjoy the transferred POI.